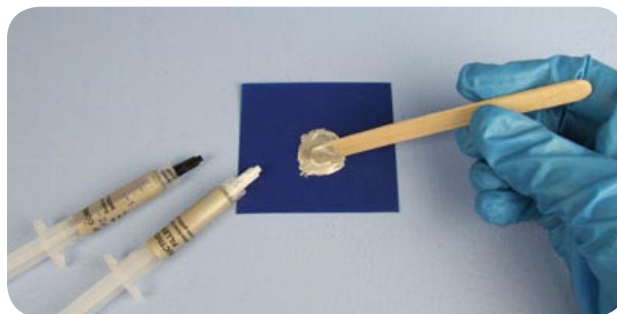


1 What you need

Syringes of A and B conductive epoxy filler, blue plastic mixing square, mixing stick and several grades of wet and dry paper for rubbing down.

Preparing and using Conductive Epoxy Filler

Conductive epoxy filler makes mending holes and dents in your work very straight forward. Once you've filled the hole and sanded it down, all you have to do is plate over it and the mend becomes almost invisible. This not only saves valuable time but also avoids the risk of further damage caused by silver soldering, a vital consideration when renovating jewellery and antiques. We have included a mixing kit comprising of several mixing sticks and small squares of flexible plastic, to make the preparation stage hassle free.



2 Mixing Filler

Squeeze out an equal amount of A and B and mix with the mixing stick. *Remember to put the right cap back on the right syringe, immediately after use!*



3 Applying Filler

Place the mixed filler in the hole or indentation in your work. Don't smooth it off too much at this stage, as you'll need extra filler to rub down later, so that it's flush with the surface of your work.

Setting times will vary according to the temperature you are working in. They are as follows; at 24°C - 4 hours, 65° - 10 minutes. **Once you have mixed the filler, use within 10 minutes.**



5 Plating and finishing

To make sure the surface you have been filling is perfectly clean and free of dust before plating, spray with deionised water and rub with MetaPrep Ultra.

You are now ready to plate over your repair as normal, using any plating process that your work requires.

4 Shaping and finishing



Once the filler is fully hardened, start shaping with wet and dry paper. Start with a grade 600 then move up to 1000 and finish with 1500. You

need to use water with the paper and a little soap increases the fineness even more. You can then machine polish to achieve a perfectly smooth result. Please refer to the pages on machine polishing in our manual for guidance.